



## OLSEN



FIXED PRICE

# \$799,450

20 NATAL PLACE, OCEAN GROVE  
COASTAL VINES

HOME SIZE 19SQ  
LAND SIZE 373m<sup>2</sup>

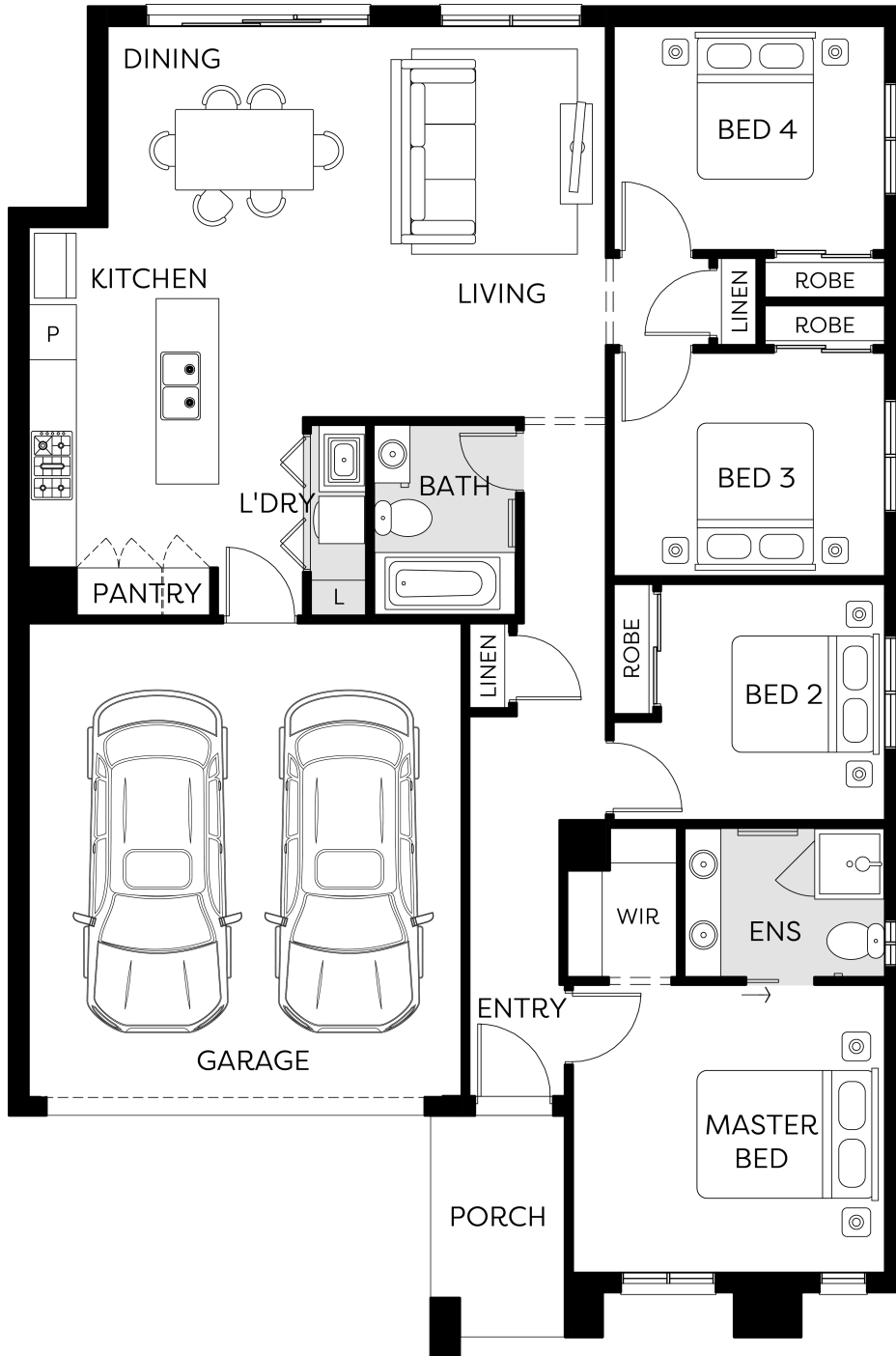


- Architectural façade
- 2740mm ceiling heights to ground floor
- 40mm stone benchtops including waterfalls - *Design specific*
- 40mm stone benchtop to ensuite and bathroom
- SMEG kitchen appliances including dishwasher
- Premium splashback to kitchen

- Timber laminate Flooring to living areas
- Quality carpet to bedrooms
- Tiled shower bases
- Sliding Robe doors
- LED downlights
- Landscaping to front and rear including letterbox, clothesline and fencing

# \$799,450

20 NATAL PLACE, OCEAN GROVE  
COASTAL VINES



Whilst care has been taken in the preparation of this flyer, the particulars are not to be construed as containing any representation of the facts upon which any interested party is entitled to rely. This flyer is intended to provide general information only and does not constitute an offer to supply. All photographs, plans, maps and drawings are illustrative only and may not be to scale. Lot layout, lot size dimensions, easements, landscape treatments and final road layout are subject to change and conditional on authority approval. All interested parties should make their own enquires. Information contained is correct at the time of printing. \* Source: Victorian Planning Authority | CDB-U 50036